

## Measurements °C

Ar1	Max	139.9
	Min	27.2
	Average	42.6
Sp1		107.9

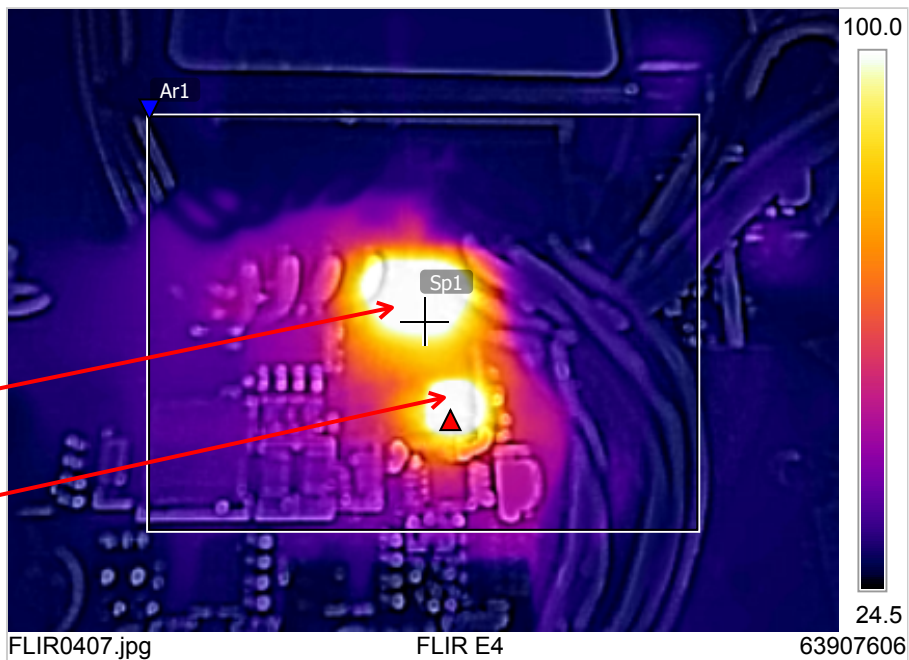
## Parameters

Emissivity	0.98
Refl. temp.	20 °C

CPU

U6 (reg)

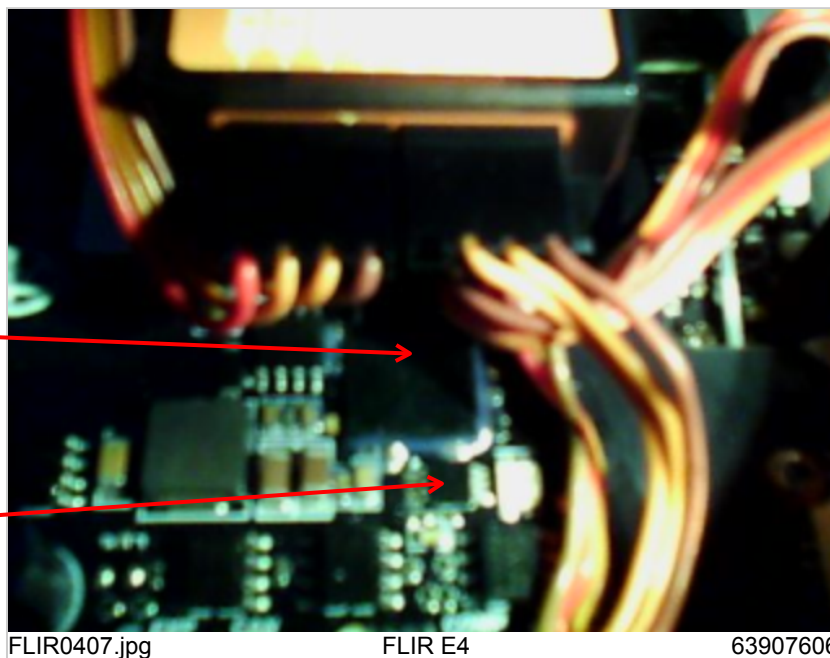
8/1/2015 9:57:54 AM



8/1/2015 9:57:54 AM

CPU

U6



Battery end of quad (out of view)